

Name \_\_\_\_\_  
Date \_\_\_\_\_

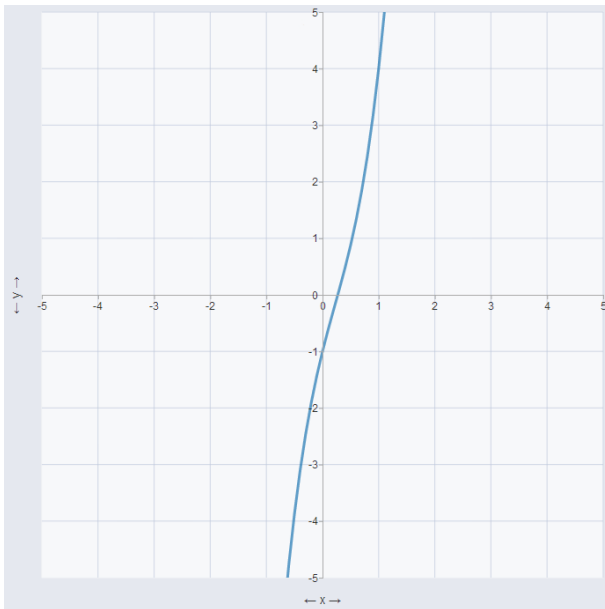
**Find the inverse of each of the following discrete functions.**

1.  $\{(2,3), (-1,4), (3,8), (-2,5)\}$

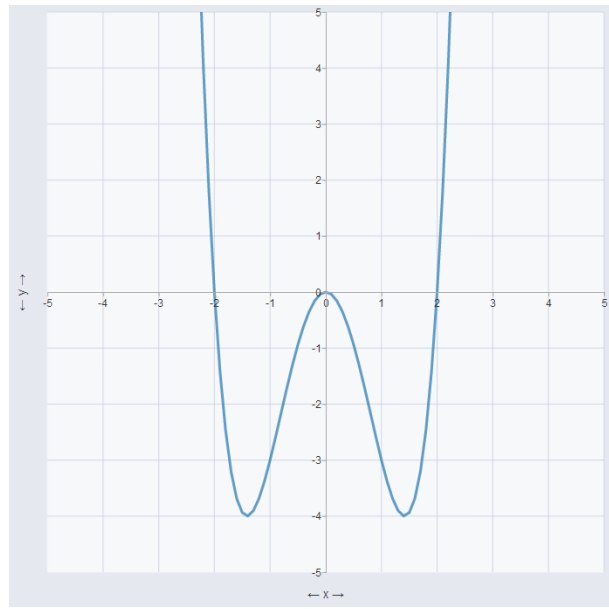
2.  $\{(-3,6), (2,2), (5,-1), (3,4)\}$

**Use the horizontal line test to determine whether the inverses of the following graphs will be functions or not.**

3.

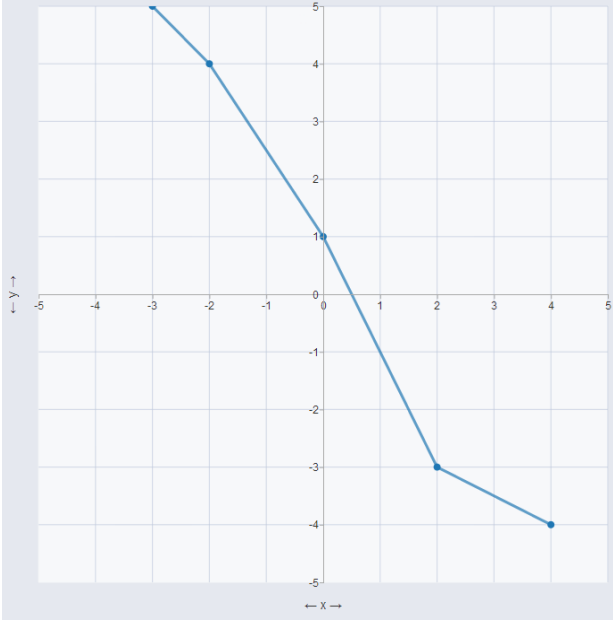


4.

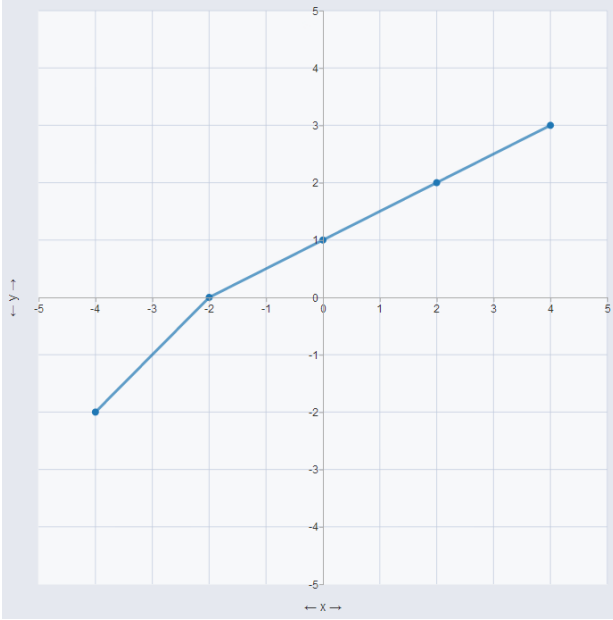


Graph the inverse of the following functions by reversing the ordered pairs.

5.

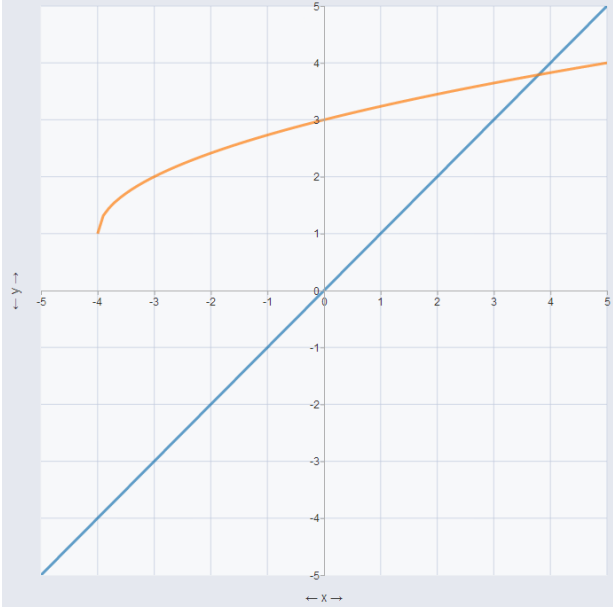


6.

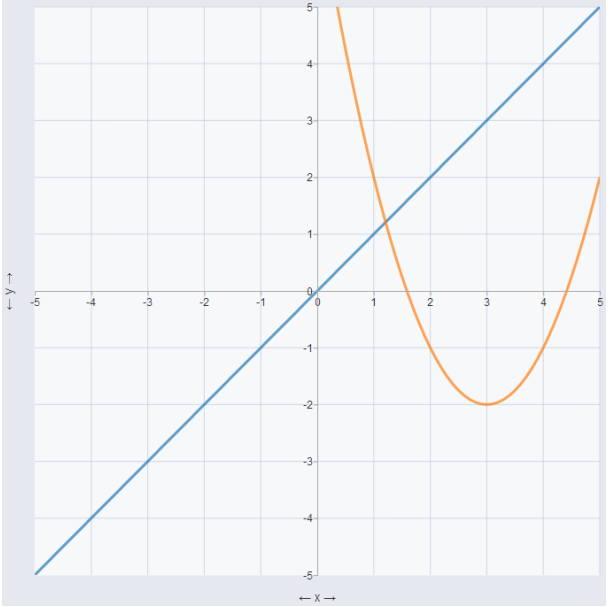


Graph the inverse of the following functions by reflecting the function over the line  $y = x$ .

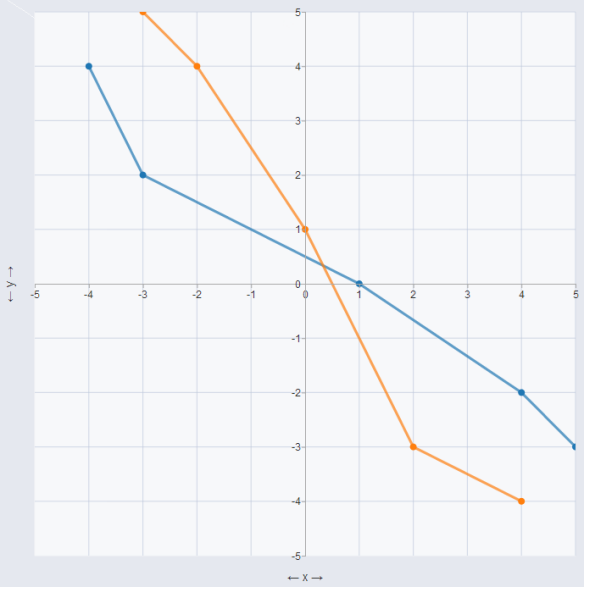
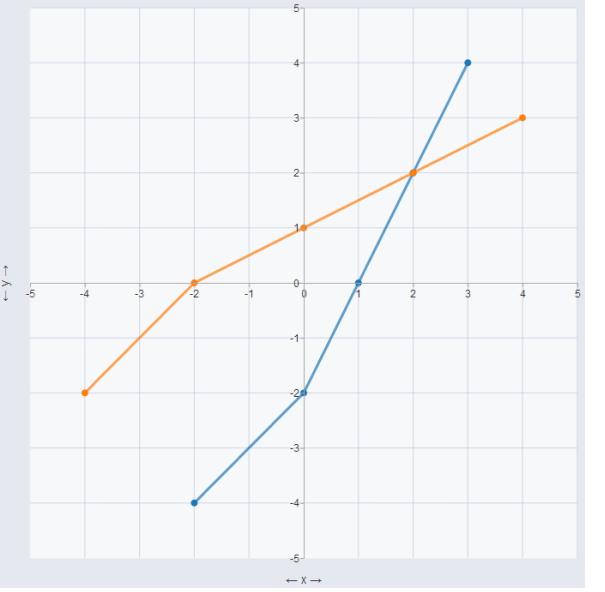
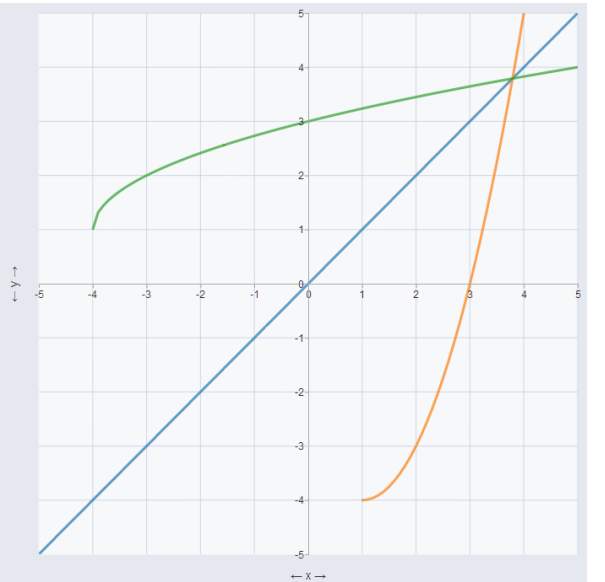
7.



8.



Answer Key:

1. $\{(3,2), (4,-1), (8,3), (5,-2)\}$	2. $\{(6,-3), (2,2), (-1,5), (4,3)\}$
3. Yes, the inverse is a function.	4. No, the inverse is not a function.
<p>5.</p> 	<p>6.</p> 
<p>7.</p> 	<p>8.</p> 